



PLURA
INNOVATIONS

POLYDECK

**BUILT ENVIRONMENT
PANELS, TACTILES & TREADS**

DDA COMPLIANT ANTI SLIP TREADS

GRIPFAST DDA (Disability Discrimination Act) Compliant Anti Slip Treads have been designed to enable customers to comply with the requirements of the Disability Discrimination Act and Part M of the Building Regulations.

The regulations state that a stepped access will satisfy requirement M1 or M2 if '...all nosings are made apparent by means of a permanently contrasting material 55mm wide on both the tread and the riser'. GRIPFAST DDA Compliant Anti Slip Treads incorporate this colour constant and contrasting nosing, thereby ensuring compliance with the DDA recommendations and Building Regulations.

Product Thickness

- 6mm

Aggregate Grades

- Barefoot - Heavy Pedestrian
- Offshore - Pedestrian

Colours

- Any BS or RAL colour available

Finishes

- Plain
- Diamond
- Tile Effect
- Timber Planking Effect

Maximum Single Tread Size

Treads are made-to-measure from 1220mm x 2440mm panels, but can be grooved and interlocked with an aluminium joining piece to create longer/wider treads.



GRIPFAST DDA Compliant Anti Slip Treads are manufactured from a durable GRP (glass reinforced polyester) substrate incorporating a 'near-diamond-hard' finish. They can be supplied in a range of finishes, aggregate grades and an infinite number of colours.

Suitable for use on timber, concrete, steel, and open grating, GRIPFAST DDA Compliant Anti Slip Treads are suitable for both internal and external use and are resistant to oil, grease and most chemicals. They are designed to be bonded and mechanically fixed to virtually any structurally sound and level substrate and will provide a guaranteed slip resistant surface for up to 30 years.

Product Benefits

- Product installation ensures compliance with current DDA (Disability Discrimination Act) and Building Regulations.

- Available in an infinite number of colours and a range of patterns ensuring that DDA compliant treads can be optimally matched to the environment.

- Treads meet the UK Slip Resistance Group classification of 'Low Slip Potential' minimising the risk of slip accidents.

- Manufactured in the UK to British Standards and supported with a design life guarantee of thirty years.

- Colour constant product means that the finished look will not require re-painting.

- Treads are tailor-made to specific length and width requirements for optimal fit.

- Option to have smooth risers on the treads ensures product is easy to keep clean.

- Option to have chamfered leading edge eliminates the risk of trips.

ANTI SLIP PANELS

GRIPFAST Anti Slip Panels are a rigid finished product manufactured from a durable GRP (glass reinforced polyester) substrate and contain an integral 'near-diamond-hard' aggregate which provides a durable anti slip surface which will never rot (unlike timber panels).

The panels are quick and easy to install and can be bonded and mechanically fixed to virtually any structurally sound

Product Thickness

- 2mm
- 4mm
- 6mm
- 9mm
- 12mm
- Bespoke sizes available

Aggregate Grades

- Barefoot
- Heavy Pedestrian
- Offshore
- Pedestrian

Colours

- Any BS or RAL colour available

Finishes

- Plain
- Diamond
- Tile Effect
- Timber Planking Effect

Maximum Single Panel Size

- 1220mm x 2440mm
- 6mm Anti Slip Panels can be grooved and interlocked with an aluminium joining piece to create longer/wider panels.

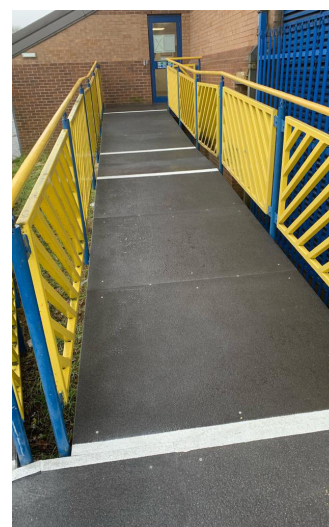
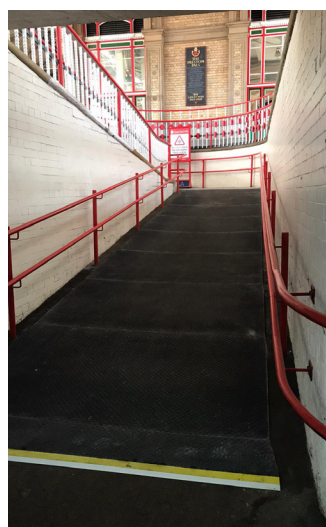


and level substrate providing a guaranteed slip resistant surface for up to 30 years.

Suitable for use on timber, concrete, steel, and open grating, the panels can be supplied in a range of thicknesses, colours and finishes to meet your exact requirements. The panels are suitable for both internal and external use and are resistant to oil, grease and most chemicals.

Product Benefits

- Available in an infinite number of colours and a range of patterns ensuring that panels can be optimally matched to the environment.
- Panels meets the UK Slip Resistance Group classification of 'Low Slip Potential' minimising the risk of slip accidents.
- Manufactured in the UK to British Standards and supported with a design life guarantee of thirty years.
- Colour constant product means that the finished look will not require re-painting.
- Panels are tailor-made to specific length and width requirements for optimal fit.



CORDUROY TACTILES

GRIPFAST Corduroy Tactiles are designed to warn visually impaired people of the presence of hazards such as stairs, level crossings, or the approach of on-street light rapid transit (LRT) platforms. GRIPFAST Corduroy Tactiles convey the message 'Hazard. Proceed with caution.'

GRIPFAST Corduroy Tactiles have been designed to enable customers to comply with the requirements of the Disability Discrimination Act and Part M of the Building Regulations. The regulations state that a stepped access will satisfy requirement M1 or M2 if '...a 'corduroy' hazard warning surface is provided at top and bottom landings of a series of flights to give advance warning of a change in level.'

GRIPFAST Corduroy Tactiles are manufactured from a durable GRP (glass reinforced polyester) panel. The panel surface comprises rounded bars running

transversely across the direction of pedestrian travel. The bars are 6mm high, 20mm wide and spaced 50mm from the centre of one bar to the centre of the next. Each bar contains a near-diamond- hard aggregate which gives it an anti slip surface profile and ensures a long life span.

GRIPFAST Corduroy Tactiles can be supplied in an infinite number of colours and are suitable for use on timber, concrete, flat steel, tarmac and asphalt substrates. They are suitable for both internal and external use and are resistant to oil, grease and most chemicals. They are quick and easy to install and can be bonded and mechanically fixed to virtually any structurally sound and level substrate and will provide a guaranteed slip resistant surface for up to 30 years.

Product Thickness

- 4mm or 6mm base plus 6mm high bars. Each tactile can be chamfered to avoid a trip hazard.

Colours

- Any BS or RAL colour available

Standard Sizes

- Tactiles are always 800mm deep and are sold by the linear metre

- Maximum single tactile size is 800mm x 2440mm, but tactiles can be butt-joined together to form longer runs.

Product benefits

- Product installation ensures compliance with current DDA (Disability Discrimination Act) and Building Regulations.

- Available in an infinite number of colours ensuring that the tactiles can be optimally matched to the environment.

-Tactiles meet the UK Slip Resistance Group classification of 'Low Slip Potential' minimising the risk of slip accidents.

- Manufactured in the UK to British Standards and supported with a design life guarantee of thirty years.
- Tactiles conform to all current DETR and Network Rail guidelines.

- Tactiles are tailor-made to specific length requirements for optimal fit.

- Option to have chamfered leading edge eliminates the risk of trips.

- Can be glued and/or screwed down to virtually any surface eliminating the need for time-consuming and costly excavation.



STANDARD ANTI SLIP TREADS

GRIPFAST Standard Anti SlipTreads are a rigid finished product manufactured from a durable GRP (glass reinforced polyester) substrate and contain an integral 'near-diamond-hard' aggregate which provides a durable anti slip surface which will never rot.

Suitable for use on timber, concrete, steel, and open grating, GRIPFAST Standard Anti Slip Treads are suitable for both internal and external use and are resistant to oil, grease and most chemicals. All treads are made-to-measure to exact requirements and are available in a range of aggregate grades and an infinite number of colours.

The treads are quick and easy to install and can be bonded and mechanically fixed to virtually any structurally sound and level substrate providing a guaranteed slip resistant surface for up to 30 years.

Product Thickness

- 4mm

Aggregate Grades

- Barefoot
- Pedestrian
- Heavy Pedestrian
- Offshore

Colours

- Any BS or RAL colour available

Finishes

- Plain Gritted Finish

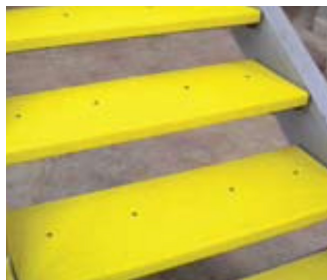
Tread Size

- Treads are made-to-measure from a maximum single size of 2440mm wide x 595mm deep



Product benefits

- Available in a range of aggregate grades and infinite number of colours to match the environment.
- Treads meet the UK Slip Resistance Group classification of 'Low Slip Potential' minimising the risk of slip accidents.
- Option to have a colour contrasting sight-line and nosing painted onto the front of the treads for added operator safety.
- Design life guarantee of thirty years ensures a long life for an installation.
- Colour constant product means that the finished look will not require re-painting.
- Treads are tailor-made to specific length and width requirements for optimal fit.
- Option to have chamfered leading edge eliminates the risk of trips.



LOAD BEARING PANELS AND TREADS

GRIPFAST LBF Load-Bearing Panels and Treads are the ideal solution for customers looking to install panels or treads which are fully load-bearing and also slip resistant.

Designed to be used for bridges, ramps, walkways, station platforms and stairs, GRIPFAST LBF Load Bearing Panels and Treads are manufactured from a unique structural composite core which combines superior strength and rigidity with lightness of weight for ease of installation.

Available in a range of sizes, thicknesses, decorative patterns and colours, GRIPFAST LBF Load-Bearing Panels and Treads will provide a suitable non slip load-bearing structure, which will not rot (like timber) or corrode (like metal). GRIPFAST LBF Load-Bearing Panels and Treads have a design life of 30 years and are also fire resistant.

Product Thickness

- Treads available in 36mm, 58mm and 72mm (DDA compliant) thicknesses.
- Panels available in 25mm and 36mm thicknesses.

Aggregate Grades

- Barefoot - Heavy Pedestrian
- Offshore - Pedestrian

Standard Colours

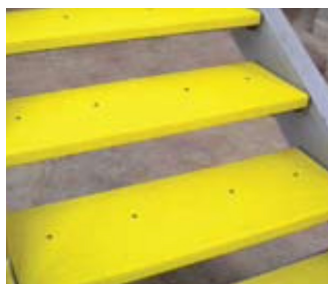
- Black, Yellow, Grey, Brown, Blue

Non Standard Colours

- Other BS and RAL colours available on request

Finishes

- Plain - Tile Effect
- Diamond - Timber Planking Effect



Standard sizes

Treads

- Widths available: 600mm, 800mm, 900mm, 1200mm, 1500m, 1800mm.
- Depths available: 280mm.

Panels

- Widths available: 610mm and 1220mm.
- Depths available: 600mm, 800mm, 900mm, 1000mm, 1200mm, 1500mm, 1800mm and 2440mm.

Non standard sizes

- Other sizes available on request.

Product benefits

Available in a range of standard colours and patterns ensuring that panels and treads can be optimally matched to the environment.

- Treads meet the UK Slip Resistance Group classification of 'Low Slip Potential' minimising the risk of slip accidents.

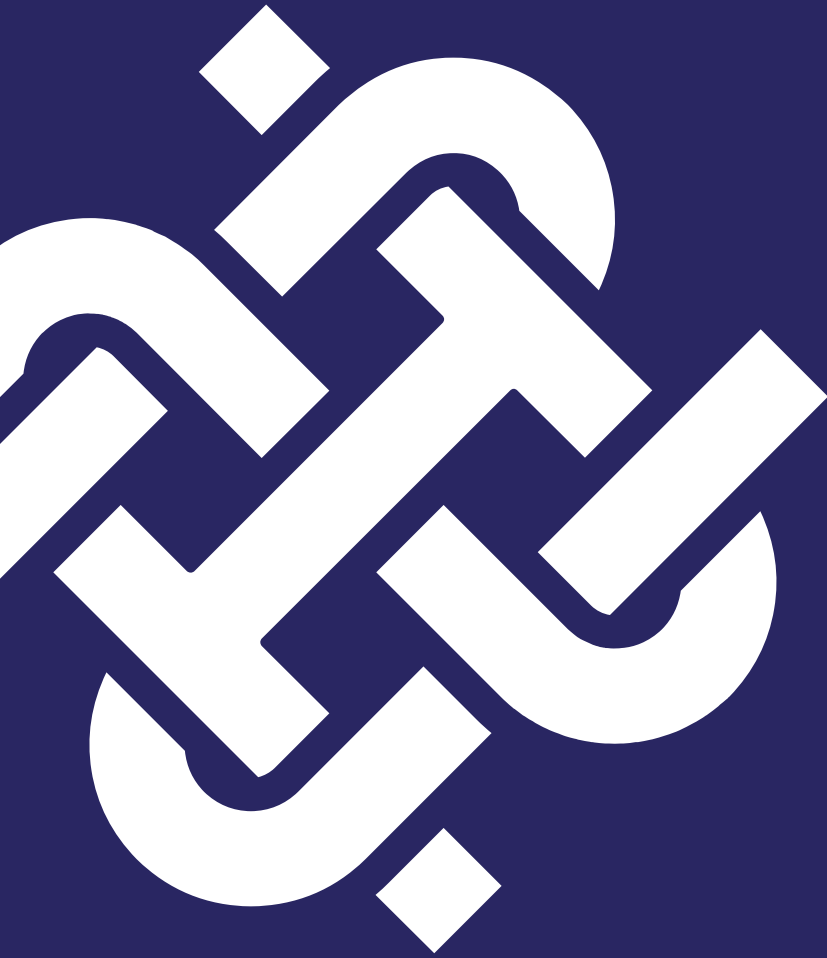
- Design life guarantee of thirty years ensures a long life for an installation.

- Colour constant product means that the finished look will not require re-painting.

- Available in a range of sizes for optimal fit.

- Light-weight for ease of installation, yet manufactured from a unique structural composite core for strength, structural rigidity and a long life.

- Fire-resistant.



Contact us:

POLYdeck Limited

Unit 14
Burnett Industrial Estate
Cox's Green
Wrington
Bristol
BS40 5QS

Telephone: 01934 806221
Email: sales@polydeck.co.uk

www.polydeck.co.uk



POLYDECK
A PLURA COMPANY